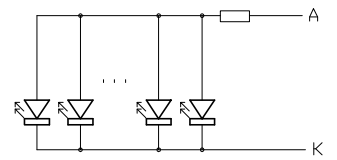
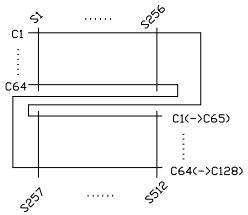


| Terminal | |
|----------|----------|
| No. | Pin Name |
| 1 | VDD |
| 2 | VSS |
| 3 | VEE |
| 4 | CL1(LP) |
| 5 | DF |
| 6 | DISP/OFF |
| 7 | NC |
| 8 | I□68(YD) |
| 9 | CL2(XCK) |
| 10 | NC |
| 11 | D0 |
| 12 | D1 |
| 13 | D2 |
| 14 | D3 |
| 15 | LEDA |
| 16 | LEDK |

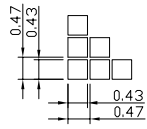


Backlight Circuit
Scale=free

- Note:
- *1. LCD Display Type : STN/Blue
 - *2. Viewing Direction : 6H
 - *3. Duty : 1/65; Bias : 1/9; Vop : 13.8V
 - *4. Operating Voltage : 5.0V
 - *5. Operating Temperature : 0°C~50°C
 - *6. Storage Temperature : -20°C~60°C
 - *7. Control/Drive IC : NT7086 or RA0086
 - *8. Backlight : White LED<5.0V-7LED>



Panel Wiring Details
Scale=free



Pixels Details

| | | | |
|--------------------|------------|--------------|-----|
| T S DISPLAY | | Dwg Title | REV |
| | | TSM256128C-B | A0 |
| Dwg No. | Date | | |
| RD-D-014 | 2012-10-18 | | |
| Scale | Unit | Tol. | |
| 1/3 | mm | ±0.2 | |
| Drawn | Checked | Approved | |
| RD01 | Andyi | | |